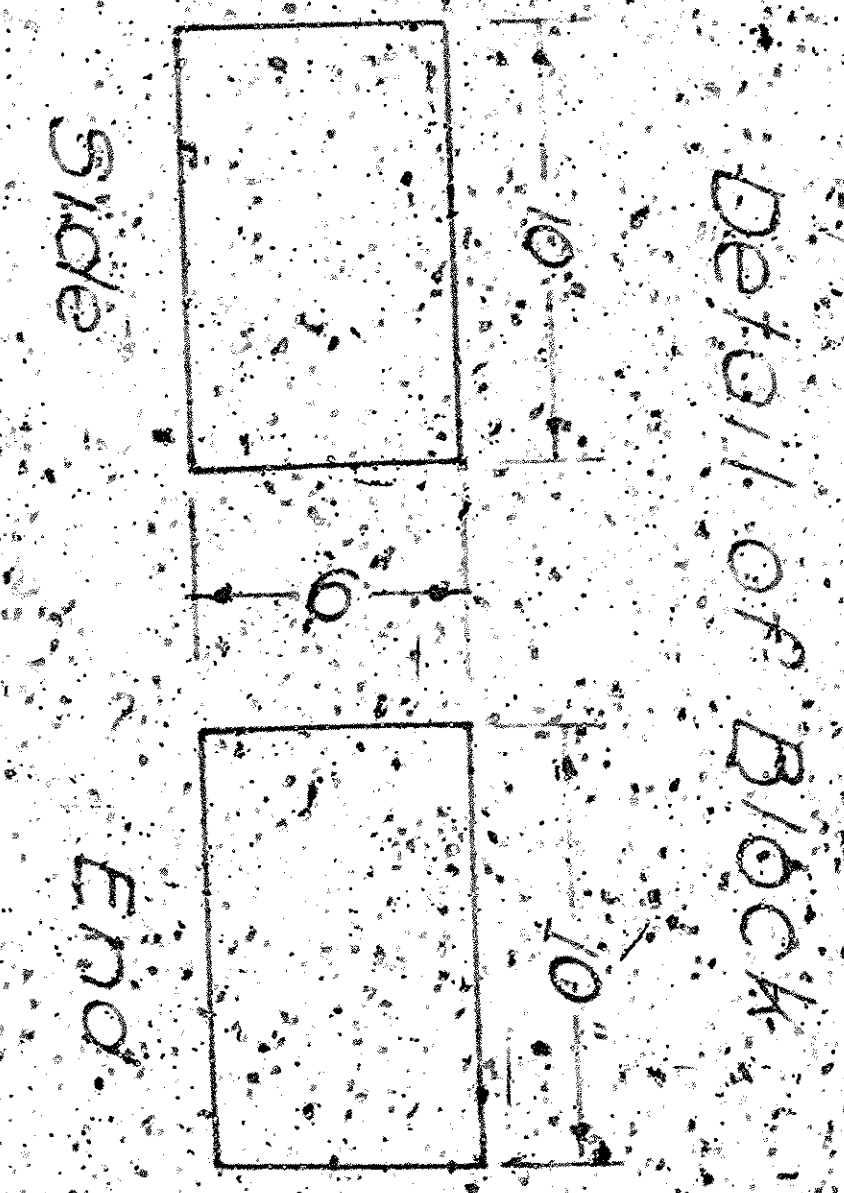


PLAN OF MASSEY PATENTED REINFORCED CONCRETE CRIBBING

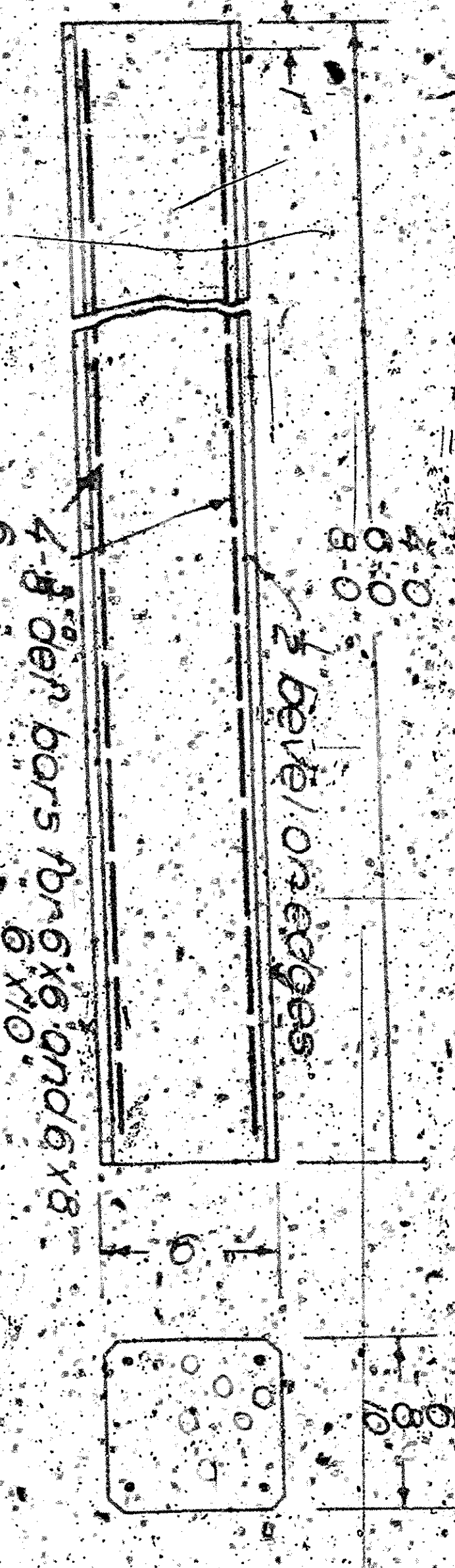
CITY OF LOS ANGELES
JOHN C. SHAW - CIVIL ENGINEER

Submitted Sep. 14, 1928
Engineer
John C. Shaw

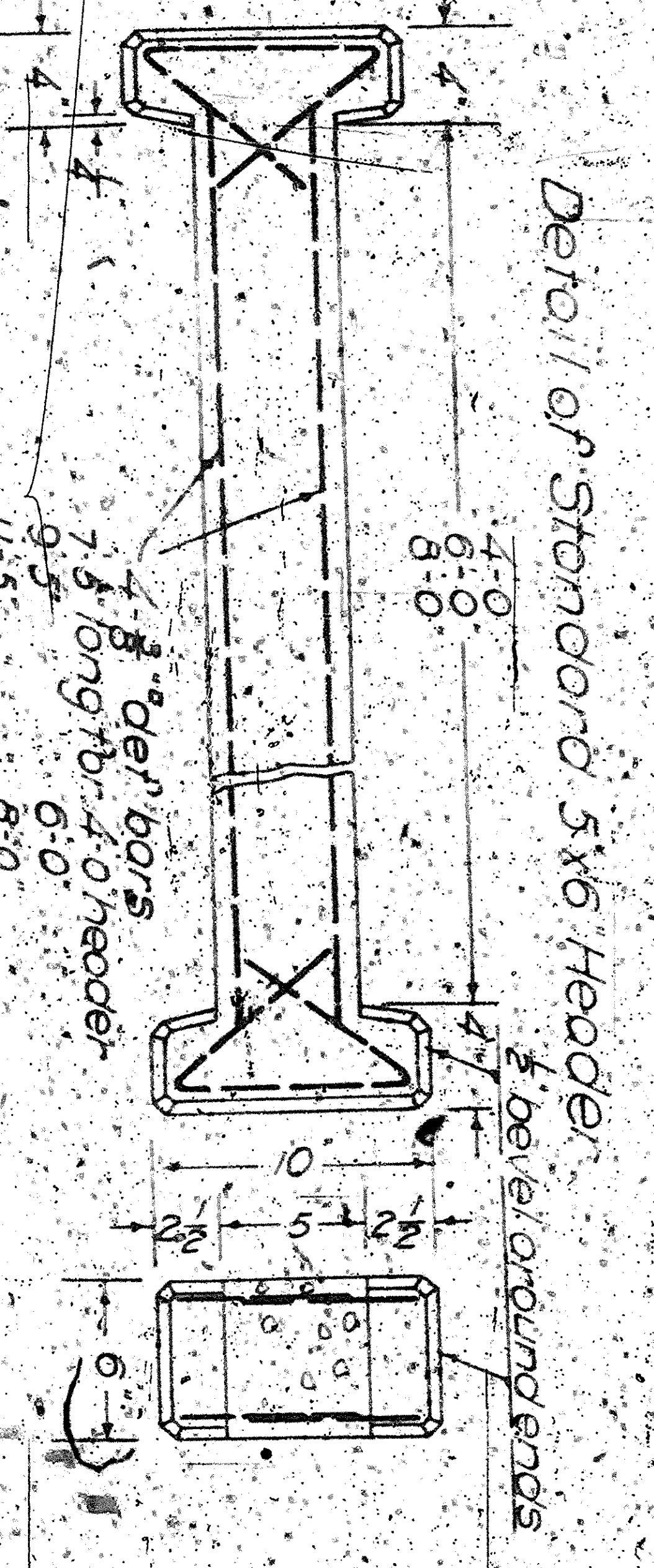
Approved Sept. 8, 1928
JOHN C. SHAW
By: Chief Security



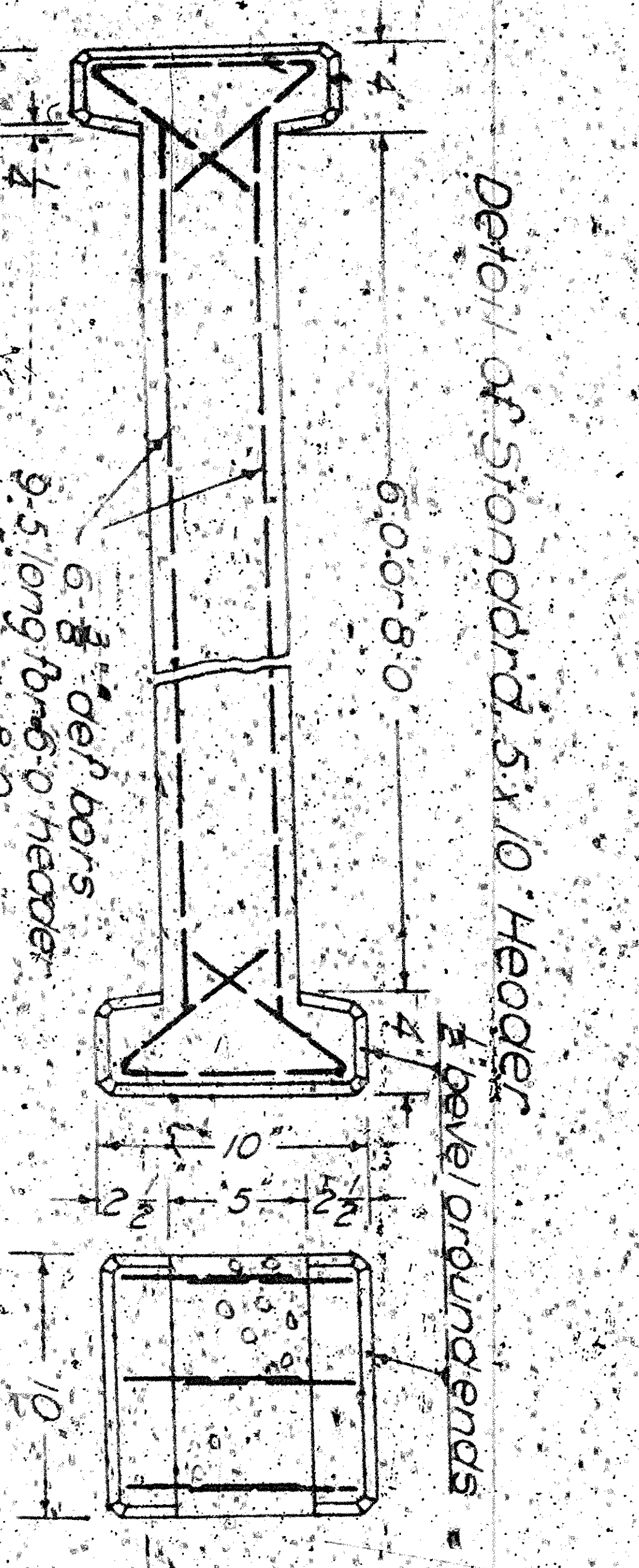
Detail of Block



Detail of Standard Stretcher



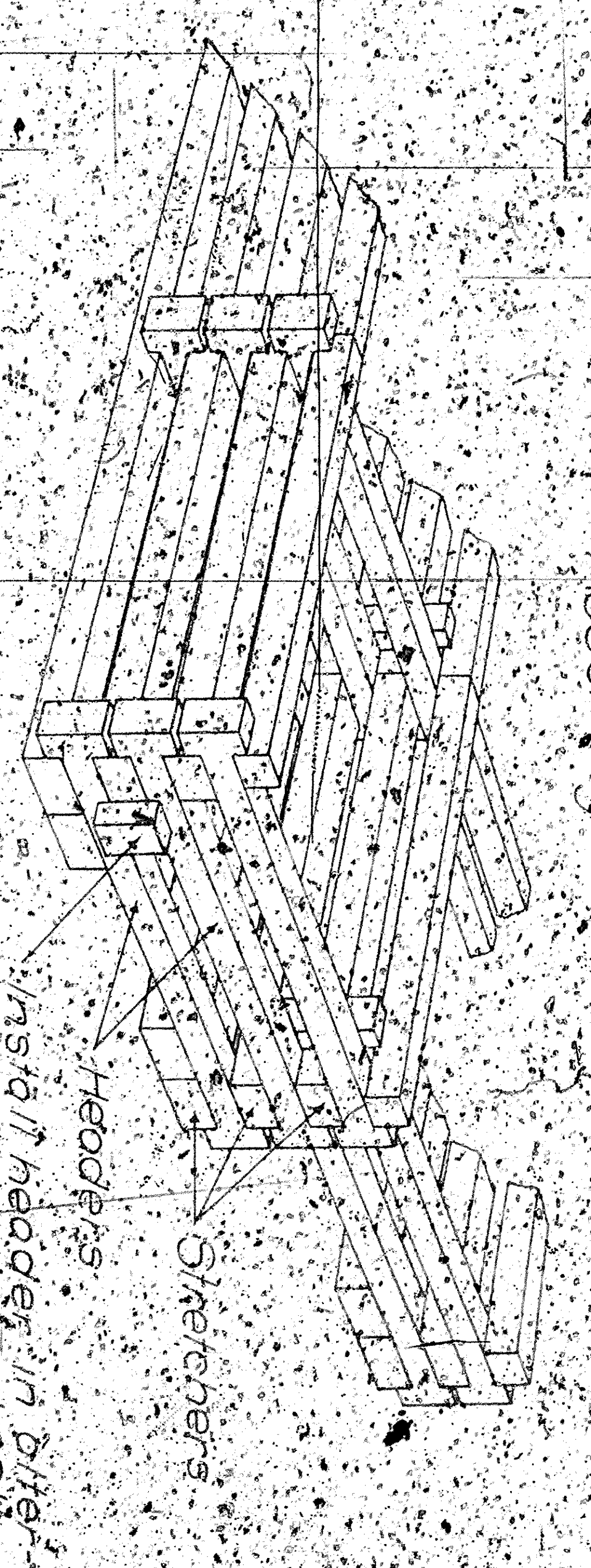
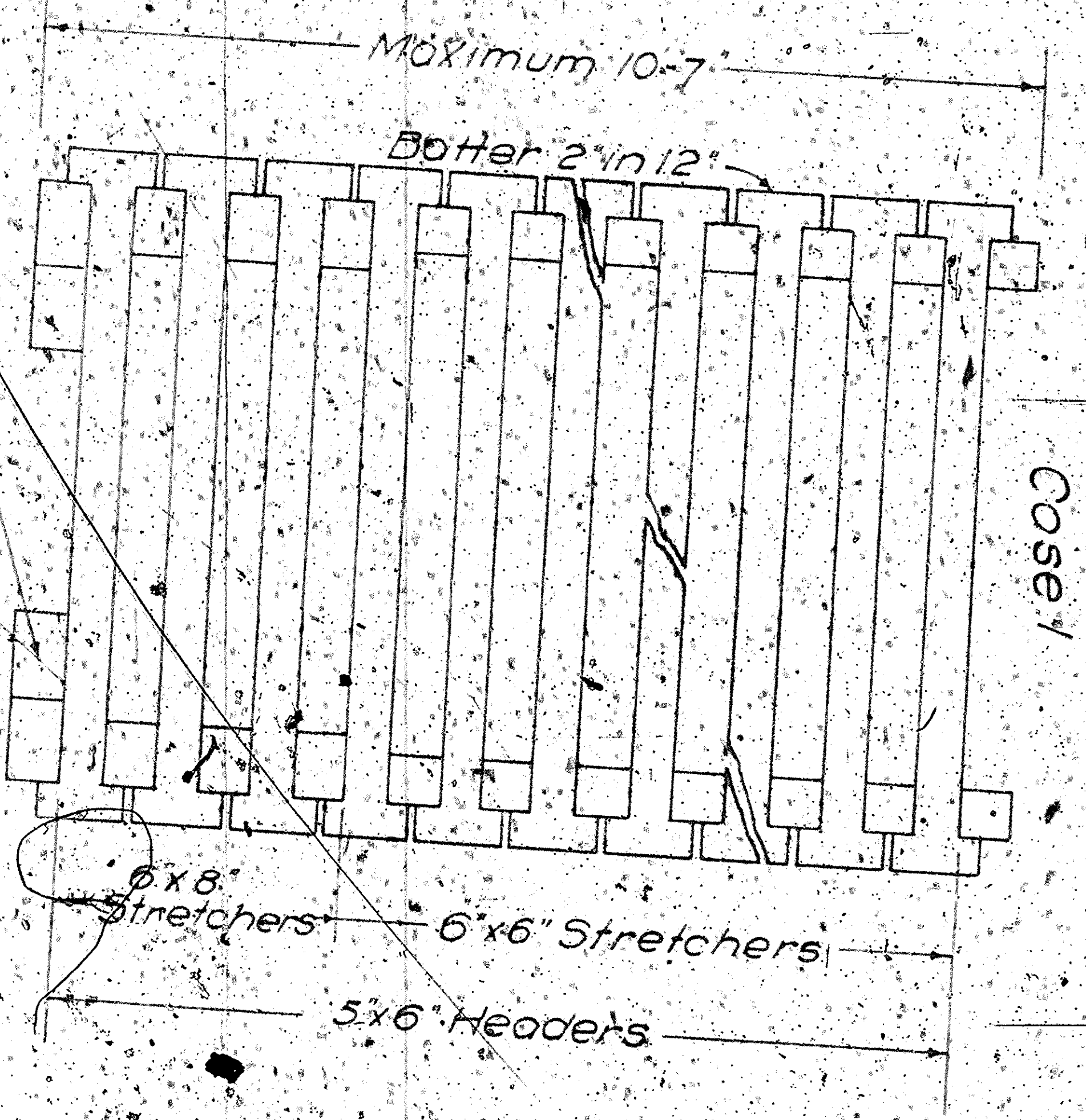
Detail of Standard 5x6 Header



Detail of Standard 5x10 Header

NOTES

1. All material shall conform to the last adopted specifications.
2. Ch-b walls less than 10' high shall conform to Case 1. Walls over 10' high and less than 19.9' shall conform to Case 2. Walls over 19.9' high will require special details to be shown on general plans.
3. Cr-b walls may be constructed on curves as per details herein except where spaced between abutting ends of stretchers exceeds 1'. In such cases construction details shall be shown on general plans. Only rear stretchers may be staggered to over 100'.
4. Alignment and level shall be constantly checked during construction for proper slope and bearing surfaces and be used to adjust elevation except that no more than three layers shall be used in one place. Walls shall not be laid higher than three feet above back-filling. Back-filling shall be compacted by flooding.
5. All reinforcing rods shall be 1" clear. Concrete used shall be composed of one part cement, two parts sand and three parts rock.



Assembly

B-1031

B-1031

B-1031